





FROM THE PAST  
INTO THE PRESENT  
FOR THE FUTURE

*Made by hand. Traditional authenticity.*

*Meticulous attention to detail.*

*Antiques of the future.*



KAMLESH  
MASTER CARVER

# CRAFTSMANSHIP

CHELSEA TEXTILES HAS BEEN HAND-CRAFTING BEAUTIFUL WOODEN FURNITURE IN ITS WORKSHOP FOR ALMOST 20 YEARS. MADE BY HAND, USING SUSTAINABLE MATERIALS, EACH PIECE IS UNIQUELY HAND-PAINTED AND HAND-DISTRESSED BY MASTER CRAFTSMEN. IT HAS TAKEN YEARS TO PERFECT THE NATURALLY DISTRESSED LOOK THAT IS SYNONYMOUS WITH THE BRAND.

EMPLOYING TRADITIONAL TECHNIQUES WITH PRECISE ATTENTION TO DETAIL, IT UPHOLDS THE COMPANY'S ETHOS TO CREATE THE ANTIQUES OF THE FUTURE.



KING GUSTAV III OF SWEDEN  
ATTRIBUTED TO PASCH, ULRIKA - LATE 18TH CENTURY

# GUSTAVIAN FURNITURE

GUSTAVIAN FURNITURE TAKES ITS NAME FROM THE 18TH CENTURY KING OF SWEDEN, GUSTAV III, AN ENTHUSIASTIC PATRON OF THE ARTS AND CULTURE, HE BROUGHT THE FRENCH STYLE TO SWEDEN BUT WITH A SCANDINAVIAN SIMPLICITY. THIS PARED DOWN AESTHETIC SPREAD THROUGHOUT SWEDEN AND REMAINS AS POPULAR TODAY AS IT WAS THEN.

CHELSEA TEXTILES LAUNCHED ITS FIRST COLLECTION OF GUSTAVIAN FURNITURE IN 2004. SINCE THAT TIME, THE COLLECTION HAS GROWN, INCORPORATING OTHER SWEDISH PERIODS SUCH AS BAROQUE AND ROCOCO. THE COMBINATION OF MUTED COLOURS, ELEGANT SILHOUETTES AND PRACTICALITY OF GUSTAVIAN FURNITURE MAKES IT EQUALLY AT HOME IN TRADITIONAL ROOMS AS MORE CONTEMPORARY SETTINGS.

THE WORN PAINT FINISH FOUND ON THE ORIGINAL PIECES IS FAITHFULLY REPRODUCED WITH MULTIPLE LAYERS OF PAINT AND SANDING TO ACHIEVE AN AUTHENTIC LOOK.

GUS015 CHAIR WITH UPHOLSTERED BACK 89 X 48 X 42 CM, 35 X 19 X 16.5"

GUS017 CHAIR WITH MEDALLION 90 X 47 X 38 CM, 33.5 X 18.5 X 15"

GUS015A CHAIR WITH MEDALLIONS ON LATTICE 89 X 48 X 42 CM, 35 X 19 X 16.5"

GUS010 CHAIR WITH OVAL BACK 100 X 46 X 46 CM, 39.5 X 18 X 18"







GUS028A TULLGARN CHAIR 82 X 62 X 71 CM, 32 X 24.5 X 28"

GUS028 WHITBY CHAIR 86 X 66 X 63 CM, 34 X 26 X 25"







GUS022A GRIPSHOLM ARMCHAIR 87 X 65 X 65 CM, 34 X 25.5 X 25.5"

GUS027 BERGÈRE CHAIR 96 X 64 X 57 CM, 38 X 25 X 22.5"





GUS060 LONG BENCH 43 X 173 X 30 CM, 17 X 68 X 12"  
GUS061 MEDIUM BENCH 43 X 142 X 30 CM, 17 X 56 X 12"  
GUS062 BENCH 43 X 92 X 30 CM, 17 X 36 X 12"  
GUS020 TABURETT 46 X 43 X 40 CM, 18 X 17 X 16"



GUS063 BENCH WITH ACORN CARVING 54 X 112 X 47 CM, 21 X 44 X 18.5"

GUS064 BENCH WITH FLUTED SQUARE LEGS 42 X 175 X 61 CM, 16.5 X 69 X 24"









GUS031 BEDSIDE TABLE WITH TWO DRAWERS 75 X 46 X 37 CM, 29.5 X 18 X 14.5"

GUS036 BEDSIDE TABLE WITH THREE DRAWERS 75 X 50 X 38 CM, 29.5 X 20 X 15"

GUS030 BEDSIDE TABLE 79 X 41 X 37 CM, 31 X 16 X 14.5"

GUS031L LARGE BEDSIDE TABLE WITH TWO DRAWERS 75 X 61 X 37 CM, 29.5 X 24 X 14.5"



GUS040 BUREAU 85 X 92 X 45 CM, 33.5 X 36 X 18"

GUS040A LARGE BUREAU 107 X 92 X 45 CM, 42 X 36 X 18"

GUS041 SMALL BUREAU 80 X 67 X 40 CM, 31.5 X 26 X 16"







GUS042B COMMODE WITH RIBBED DRAWERS 85 X 92 X 45 CM, 33.5 X 36 X 18"

GUS043A BUREAU WITH RIBBED DRAWERS 85 X 76 X 45 CM, 33.5 X 30 X 18"

GUS049B BEDSIDE TABLE WITH RIBBED TOP DRAWER 75 X 50 X 38 CM, 29.5 X 19.5 X 15"

GUS049 BUREAU WITH RIBBED TOP DRAWER 80 X 75 X 47 CM, 31.5 X 29.5 X 18.5"



GUS040LQ BUREAU 85 X 92 X 45 CM, 33.5 X 36 X 18"

GUS031LQ BEDSIDE TABLE WITH TWO DRAWERS 75 X 46 X 37 CM, 29.5 X 18 X 14.5"

GUS030LQ BEDSIDE TABLE 79 X 41 X 37 CM, 31 X 16 X 14.5"

GUS041LQ SMALL BUREAU 80 X 67 X 40 CM, 31.5 X 26 X 16"







SELECT GUSTAVIAN PIECES CAN BE  
GIVEN A MORE CONTEMPORARY  
FEEL WITH OUR VINTAGE  
LACQUER FINISH



GUS045 COMMODE WITH FLUTED CARVING 83 X 112 X 47 CM, 33 X 44 X 18"  
GUS046 SMALL COMMODE WITH FLUTED CARVING 83 X 76 X 47 CM, 33 X 30 X 18"



GUS144 SKÄNK 110 X 93 X 42 CM, 43 X 36.5 X 16"

GUS144A SIDEBOARD 104 X 142 X 42 CM, 41 X 56 X 16.5"





GUS115A SMALL ACANTHUS PEDESTAL TABLE 66 X 90 X 60 CM, 26 X 35.5 X 23.5"

GUS115 ACANTHUS PEDESTAL TABLE 79 X 120 X 80 CM, 31 X 47 X 31.5"





GUS071 WRITING DESK WITH DRAWER 75 X 110 X 60 CM, 29.5 X 43 X 23.5"

GUS071A WRITING DESK WITH RIBBED DRAWER 75 X 110 X 60 CM, 29.5 X 43 X 23.5"

GUS103 TABLE WITH CARVING & DRAWER 77 X 93 X 52 CM, 30 X 36.5 X 20"

GUS102 TABLE WITH CARVING 75 X 87 X 51 CM, 29.5 X 34 X 20"















MOSSY FROM THE FOREST  
THE CURIOUS GARDENER ANNA PAYTON

GUS086 SIDE TABLE WITH CURVED SLATS 75 X 51 X 31 CM, 29.5 X 20 X 12"

GUS050 DEMI-LUNE TABLE 77 X 102 X 51 CM, 30 X 40 X 20"

GUS114 CORNER TABLE 73 X 83 X 40 CM, 29 X 32.5 X 15.5"

GUS051 SMALL DEMI-LUNE TABLE 75 X 61 X 30 CM, 29 X 24 X 12"



GUS108 SIDE TABLE WITH DRAWER & SHELF 75 X 54 X 45 CM, 29.5 X 21 X 18"  
GUS099 CONSOLE WITH TWO DRAWERS & SHELF 75 X 120 X 45 CM, 29.5 X 47 X 18"  
GUS099A CONSOLE WITH THREE DRAWERS & SHELF 75 X 150 X 45 CM, 29.5 X 59 X 18"



GUS080 SIDE TABLE 76 X 52 X 36 CM, 30 X 20.5 X 14"

GUS090 CONSOLE WITH TWO DRAWERS 76 X 120 X 40 CM, 30 X 47 X 16"

GUS091 CONSOLE WITH THREE DRAWERS 76 X 150 X 40 CM, 30 X 59 X 16"







GUS130 HANGING WARDROBE 191 X 91 X 57 CM, 75 X 35.5 X 22.5"

GUS132 WARDROBE DIVIDED 194 X 99 X 40 CM, 76.5 X 39 X 15.5"

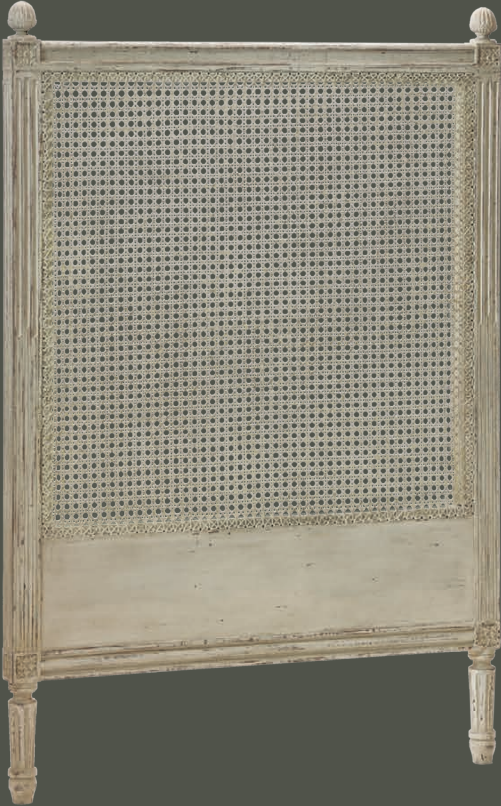




GUS166S CANED HEADBOARD SINGLE 137 X 100 X 5 CM, 54 X 39.5 X 2"

GUS170S CARVED BED SINGLE 137 X 98 X 200 CM, 54 X 39 X 79"

AVAILABLE IN STANDARD BED SIZES PLEASE VISIT OUR WEBSITE FOR DETAILS







BARONESS CHARLOTTE DU RIETZ AF HEDENBERG  
BJÖRCK, JAKOB - 18TH CENTURY

# FAUX BAMBOO

FAUX BAMBOO FURNITURE WAS POPULAR ACROSS EUROPE IN THE 18TH CENTURY AS THE CHINOISERIE STYLE TOOK HOLD. HARDWOOD WAS CARVED AND PAINTED TO SIMULATE BAMBOO, A TRADITION THAT ENDURED THROUGH DIFFERENT HISTORICAL PERIODS.

CHELSEA TEXTILES' FAUX BAMBOO COLLECTION IS INSPIRED BY THE CHAIRS OF 18TH CENTURY SWEDISH FURNITURE MAKER EPHRAIM STÅHL, WHOSE WORKSHOP FURNISHED THE PALACES OF THREE GENERATIONS OF KINGS. THE COLLECTION WAS EXPANDED TO INCLUDE BEDROOM AND OCCASIONAL FURNITURE MADE TO PERFECTLY COMPLEMENT THE STYLE.

THE FAUX BAMBOO COLLECTION IS HAND-CARVED, HAND-PAINTED AND HAND-DISTRESSED TO AN EXCEPTIONAL DEGREE, RARELY SEEN IN PAINTED FURNITURE TODAY.

TRO027 FAUX BAMBOO ARMCHAIR 84 X 59 X 51 CM, 33 X 23 X 20"

TRO026 FAUX BAMBOO CHAIR 84 X 48 X 48 CM, 33 X 19 X 19"

TRO026 FAUX BAMBOO CHAIR 84 X 48 X 48 CM, 33 X 19 X 19"

TRO029 FAUX BAMBOO ARMCHAIR WITH LATTICE BACK 96 X 59 X 51 CM, 38 X 23 X 20"









TRO067 FAUX BAMBOO BENCH 67 X 90 X 37 CM, 26.5 X 35.5 X 14.5"  
TRO067A FAUX BAMBOO SMALL BENCH 67 X 59 X 37 CM, 26.5 X 23 X 14.5"  
TRO120 FAUX BAMBOO SETTEE 83 X 131 X 54 CM, 32.5 X 51.5 X 21"









TRO108 FAUX BAMBOO SIDE TABLE WITH DRAWER 69 X 55 X 43 CM, 27.5 X 22 X 17"

TRO080 FAUX BAMBOO SIDE TABLE 69 X 52 X 40 CM, 27 X 20.5 X 16"

TRO108A FAUX BAMBOO SOFA TABLE WITH DRAWER 61 X 55 X 43 CM, 24 X 22 X 17"



TRO102 FAUX BAMBOO DINING TABLE 74 X 135 X 75 CM, 29 X 53 X 29.5"

TRO090 FAUX BAMBOO CONSOLE 76 X 120 X 40 CM, 30 X 47 X 16"

TRO150 FAUX BAMBOO COFFEE TABLE 46 X 103 X 69 CM, 18 X 40.5 X 27"







TRO031 FAUX BAMBOO BEDSIDE TABLE 75 X 50 X 43 CM, 29.5 X 19.5 X 17"

TRO031A FAUX BAMBOO LARGE BEDSIDE TABLE 80 X 48 X 43 CM, 31.5 X 19 X 17"

TRO040A FAUX BAMBOO CHEST OF DRAWERS 85 X 92 X 48 CM, 33.5 X 36 X 19"







BAY MALTON  
ATTRIBUTED TO FRANCIS SARTORIUS THE ELDER - LATE 18TH CENTURY

ENGLISH  
&  
FRENCH COUNTRY

A COLLECTION OF ELEGANT FURNITURE INSPIRED BY THE  
SOPHISTICATION OF THE ENGLISH MANOR TO THE RUSTIC  
CHARMS OF THE FRENCH & ENGLISH COUNTRYSIDE.

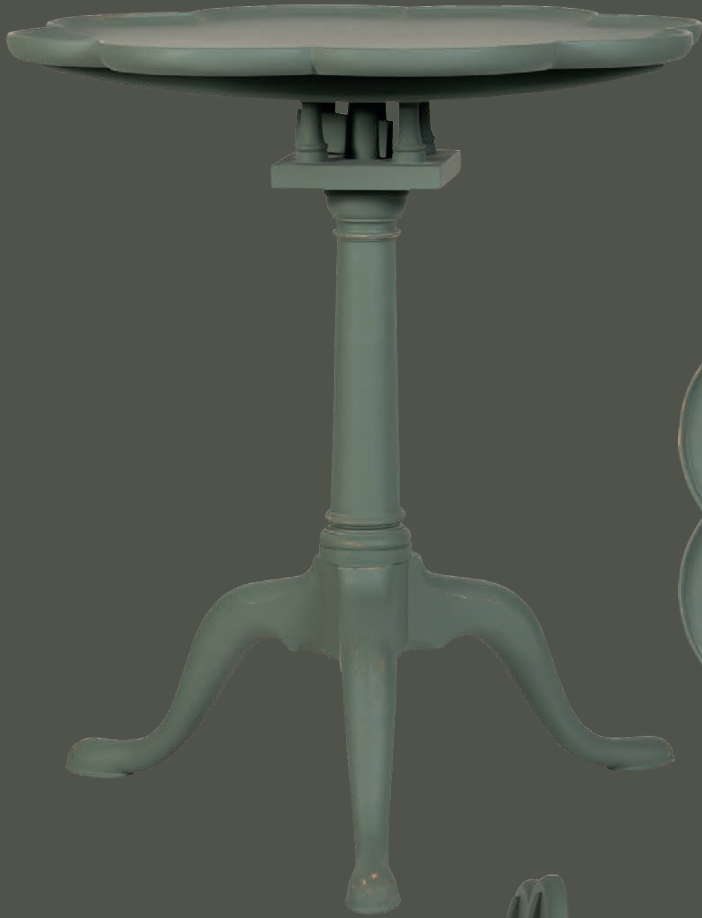
THE PIECES IN THIS COLLECTION ARE METICULOUSLY AGED BY  
MASTERCRAFTSMEN. THE FINISHES RANGE FROM THE SUBTLE  
PATINA OF HISTORIC INTERIORS, THROUGH TO THE HIGHLY  
DISTRESSED AND WEATHERED FINISH OF THE RUSTIC AND  
OUTDOOR FURNITURE.











ENG082 HEART SHAPED SIDE TABLE 68.5 X 32 X 29 CM, 27 X 12.5 X 11.5"

ENG081 SIDE TABLE WITH SHELVES 71 X 55 X 40 CM, 28 X 22 X 16"

ENG080 OCTAGONAL SIDE TABLE 56 X 61 X 61 CM, 22 X 24 X 24"







PRO030 BEDSIDE TABLE 74 X 49 X 38 CM, 29 X 19 X 15"  
PRO032 SMALL BEDSIDE TABLE 72 X 43 X 28 CM, 28.5 X 17 X 11"  
ENG100 SCALLOP ROUND TABLE 70 X 70 CM, 27.5 X 27.5"



ENG090 SCALLOP CONSOLE 80 X 120 X 32 CM, 31.5 X 47 X 12.5"





ENG044 CHEST OF DRAWERS WITH ORNATE HANDLES 95 X 92 X 45 CM, 37.5 X 36 X 17.5"

ENG033 BEDSIDE TABLE WITH ORNATE HANDLES 75 X 50 X 38 CM, 29.5 X 19.5 X 15"

ENG043 SMALL CHEST OF DRAWERS WITH ORNATE HANDLES 80 X 67 X 40 CM, 31.5 X 26.5 X 15.5"









ENG037 TALLBOY 100 X 46 X 42 CM, 39.5 X 18 X 17"

ENG036 BEDSIDE TABLE 76 X 50 X 38 CM, 30 X 19.5 X 15"

ENG040A CHEST OF DRAWERS 89 X 106 X 50 CM, 35 X 42 X 20"









PRO041A SMALL COMMODE 80 X 67 X 45 CM, 31.5 X 26.5 X 18"

PRO041 COMMODE 80 X 86 X 45 CM, 31.5 X 34 X 18"

PRO043 COMMODE WITH CAVED BASE 76 X 96 X 45 CM, 30 X 38 X 18"







ENG092 PIMLICO CONSOLE BASE 79 X 116 X 56 CM, 31 X 45.5 X 22"

PLEASE NOTE: STONE TOP TO BE SOURCED SEPARATELY







PRO150 DRESSER 212 X 144 X 40 CM, 83.5 X 57 X 16"

PRO150A LOW CUPBOARD 93 X 144 X 40 CM, 36.5 X 57 X 16"



ENG140 LOW CUPBOARD 81 X 107 X 53 CM, 32 X 42 X 21"  
PRO150A LOW CUPBOARD 93 X 144 X 40 CM, 36.5 X 57 X 16"



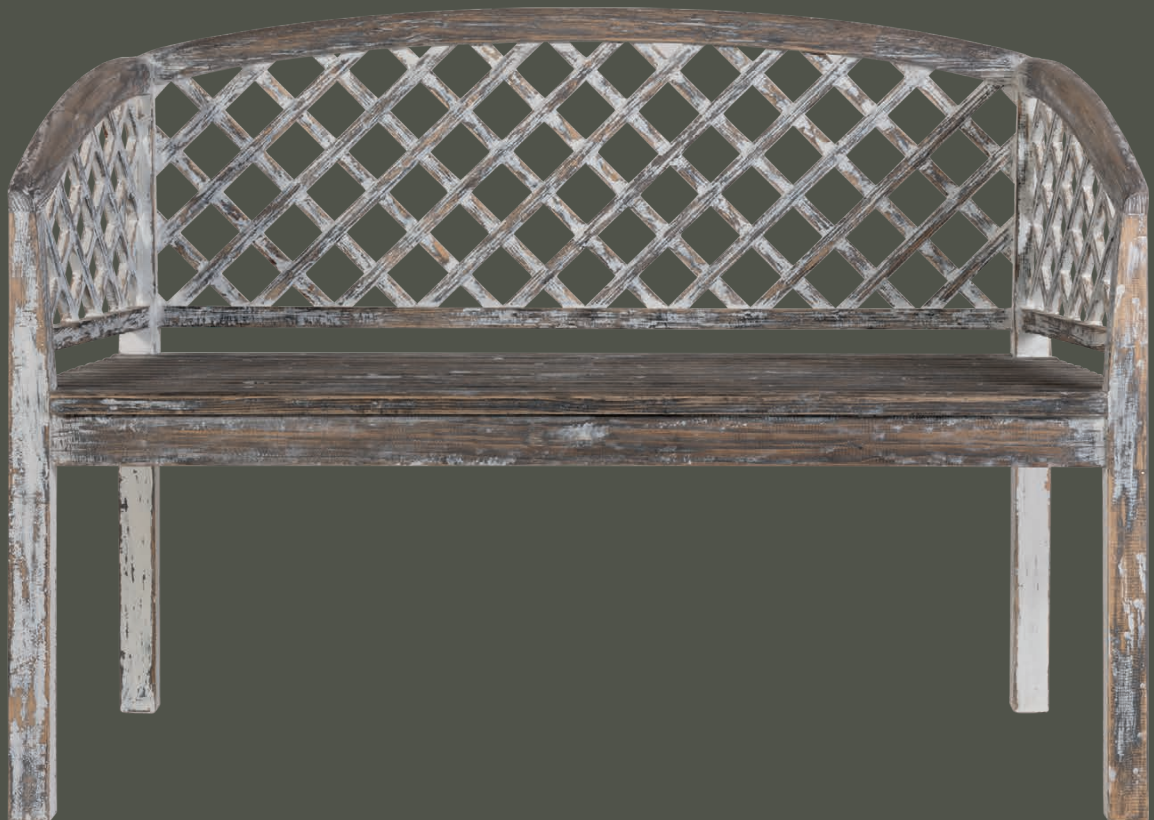






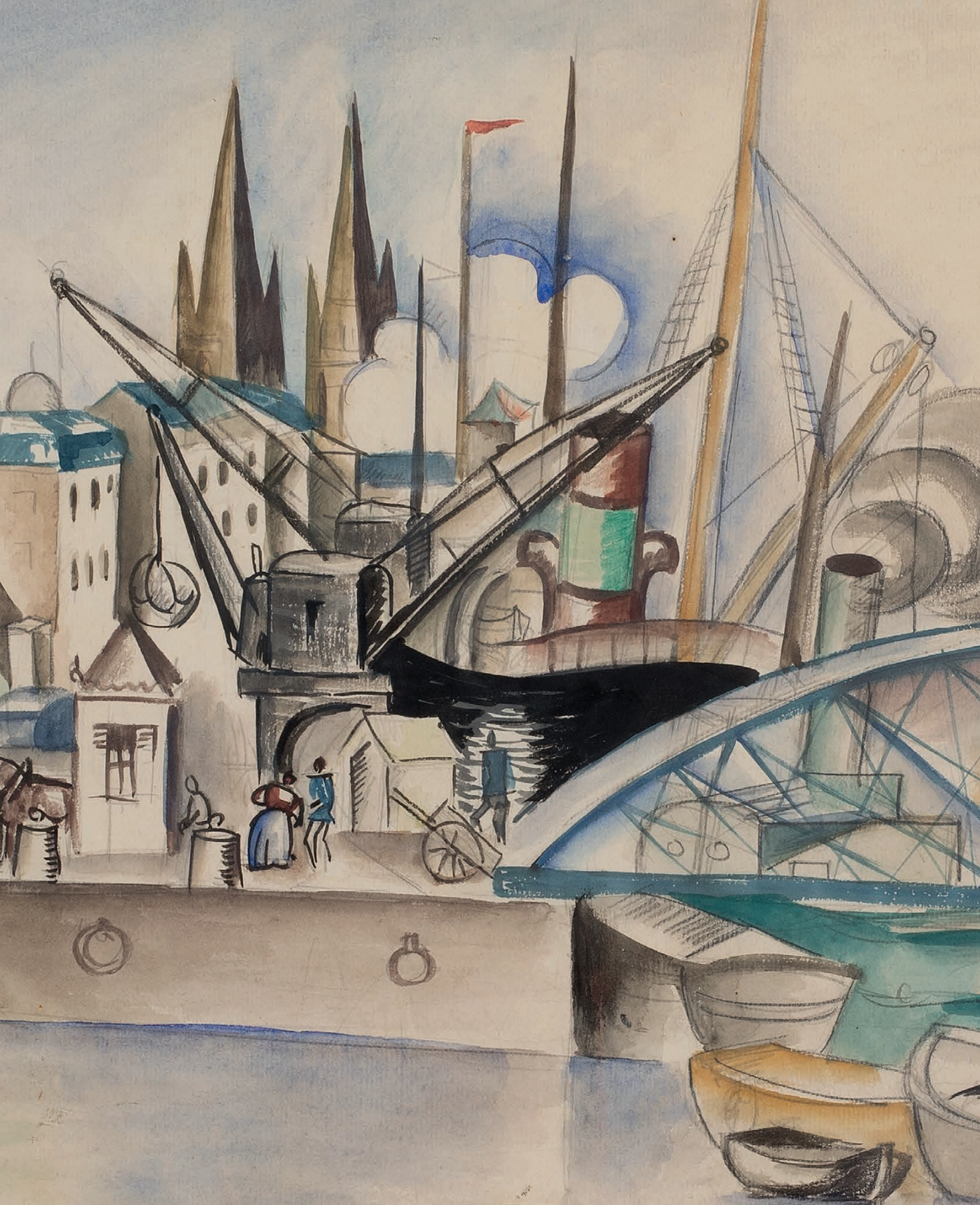


ENG026 GARDEN CHAIR 81 X 59 X 53 CM, 32 X 23 X 21"  
ENG108 GARDEN SIDE TABLE 43 X 45 X 45 CM, 17 X 18 X 18"  
ENG120 GARDEN BENCH 81 X 115 X 53 CM, 32 X 45 X 21"









DANS LE PORT  
LHOTE, ANDRÉ - EARLY 20TH CENTURY

# CAST BRONZE COLLECTION

THIS COLLECTION IS INSPIRED BY THE ICONIC PIECES DESIGNED  
BY SCULPTOR DIEGO GIACOMETTI FOR HUBERT DE GIVENCHY'S  
CHÂTEAU DE JONCHET, IN THE LOIRE VALLEY.

CHELSEA TEXTILES' INTERPRETATION OF THE GIVENCHY  
COLLECTION IS CRAFTED IN CAST BRONZE AND FINISHED BY HAND  
WITH A RICH VERDIGRIS PATINA. THE TRADITIONAL  
CRAFTSMANSHIP IS TESTAMENT TO THE COMPANY'S  
COMMITMENT TO PRODUCING HIGH QUALITY CLASSIC DESIGN  
USING AUTHENTIC MATERIALS AND PROCESSES.

BRO100 CAST BRONZE OCTAGONAL TABLE 75 X 125 X 125 CM, 30 X 49.5 X 49.5"

BRO100L CAST BRONZE LARGE OCTAGONAL TABLE 75 X 165 X 165 CM, 30 X 65 X 65"















BRO090 CAST BRONZE CONSOLE 77 X 115 X 50 CM, 30 X 45.5 X 19.5"

BRO091 CAST BRONZE NARROW CONSOLE 77 X 100 X 35 CM, 30.5 X 39.5 X 14"

BRO150 CAST BRONZE COFFEE TABLE 48 X 110 X 60 CM, 19 X 43.5 X 23.5"











CLO IN A BATHING SUIT  
JOLIN, EINAR - 1937





MID010 CHAIR WITH UPHOLSTERED BACK 79 X 44 X 52 CM, 31 X 17.5 X 20.5"

MID011 CHAIR WITH ADJUSTABLE BACK 73 X 54 X 55 CM, 29 X 21 X 21.5"

MID015 DINING CHAIR 83 X 60 X 55 CM, 32.5 X 23.5 X 21.5"

MID013 CHAIR WITH SQUARE BACK 87 X 45 X 52 CM, 34.5 X 17.5 X 20.5"





MID026 ARMCHAIR 94 X 72 X 79 CM, 37 X 28.5 X 31"

MID029 ARMCHAIR WITH HIGH BACK 99 X 72 X 79 CM, 39 X 28.5 X 31"

MID026A SMALL ARMCHAIR 77 X 72 X 72 CM, 30.5 X 28.5 X 28.5"

MID027 FOOTSTOOL 37 X 48 X 51 CM, 15 X 19 X 21"







MID028 PETAL CHAIR 87 X 86 X 73 CM, 34.5 X 34 X 29"  
MID108 BAMBOO SIDE TABLE 65 X 66 X 51 CM, 25.5 X 26 X 20"







MID032 BEDSIDE TABLE 48 X 53 X 34 CM, 19 X 21 X 13.5"

MID033 BEDSIDE TABLE WITH TWO DRAWERS 63 X 54 X 35 CM, 25 X 21.5 X 14"

MID044 LARGE BEDSIDE TABLE 79 X 64 X 40 CM, 31 X 25 X 16"





MID040 LARGE CHEST OF DRAWERS 127 X 103 X 42 CM, 50 X 40.5 X 16.5"

MID041 CHEST OF DRAWERS 90 X 80 X 40 CM, 35.5 X 31.5 X 15.5"



MID057B BEDSIDE TABLE WITH ROUND PULLS 72 X 69 X 46 CM, 28.5 X 27 X 18"

MID057A CHEST OF DRAWERS WITH ROUND PULLS 84 X 80 X 53 CM, 33 X 31.5 X 21"

MID057 LARGE CHEST OF DRAWERS WITH ROUND PULLS 84 X 123 X 51 CM, 33 X 48.5 X 20"





MID053A BEDSIDE TABLE WITH T-BAR HANDLES 72 X 62 X 43 CM, 28.5 X 24.5 X 17"

MID053 SMALL BEDSIDE TABLE WITH T-BAR HANDLES 57 X 62 X 43 CM, 22.5 X 24.5 X 17"

MID054A CHEST OF DRAWERS WITH T-BAR HANDLES 82 X 80 X 50 CM, 32.5 X 31.5 X 19.5"

MID054 LARGE CHEST OF DRAWERS WITH T-BAR HANDLES 93 X 123 X 47 CM, 36.5 X 48 X 18"









MID039 BEDSIDE TABLE WITH WICKER HANDLE 61 X 43 X 46 CM, 24 X 17 X 18"  
MID039A BEDSIDE TABLE WITH TWO DRAWERS & WICKER HANDLES 63 X 43 X 43 CM, 25 X 17 X 17"  
MID039B BEDSIDE TABLE WITH FOUR DRAWERS & WICKER HANDLES 73 X 43 X 46 CM, 29 X 17 X 18"





MID046A SMALL CHEST OF DRAWERS WITH WICKER HANDLES 80 X 70 X 43 CM, 31.5 X 27.5 X 17"  
MID046 CHEST OF DRAWERS WITH WICKER HANDLES 104 X 88 X 55 CM, 41 X 35 X 22"





MID051 BEDSIDE TABLE WITH WOOD HANDLES 77 X 50 X 41 CM, 30.5 X 20 X 16"  
MID052 CHEST OF DRAWERS WITH WOOD HANDLES 83 X 82 X 48 CM, 32.5 X 32 X 19"  
MID072 WRITING DESK WITH WOOD HANDLES 77 X 122 X 52 CM, 30.5 X 48 X 20.5"











MID076 DRESSING TABLE WITH METAL FRAME 72 X 114 X 61 CM, 28.5 X 45 X 24"  
MID060 BENCH WITH METAL FRAME & BRASS TRIM 46 X 140 X 34 CM, 18 X 55 X 13"  
MID020 STOOL WITH METAL FRAME & BRASS TRIM 46 X 54 X 34 CM, 18 X 21 X 13"



MID070 WRITING DESK 84 X 100 X 55 CM, 33 X 39 X 21.5"

MID074 DRESSING TABLE 77 X 113 X 52 CM, 30.5 X 44.5 X 20.5"



MID096 SERVER 84 X 113 X 38 CM, 33 X 44.5 X 15"

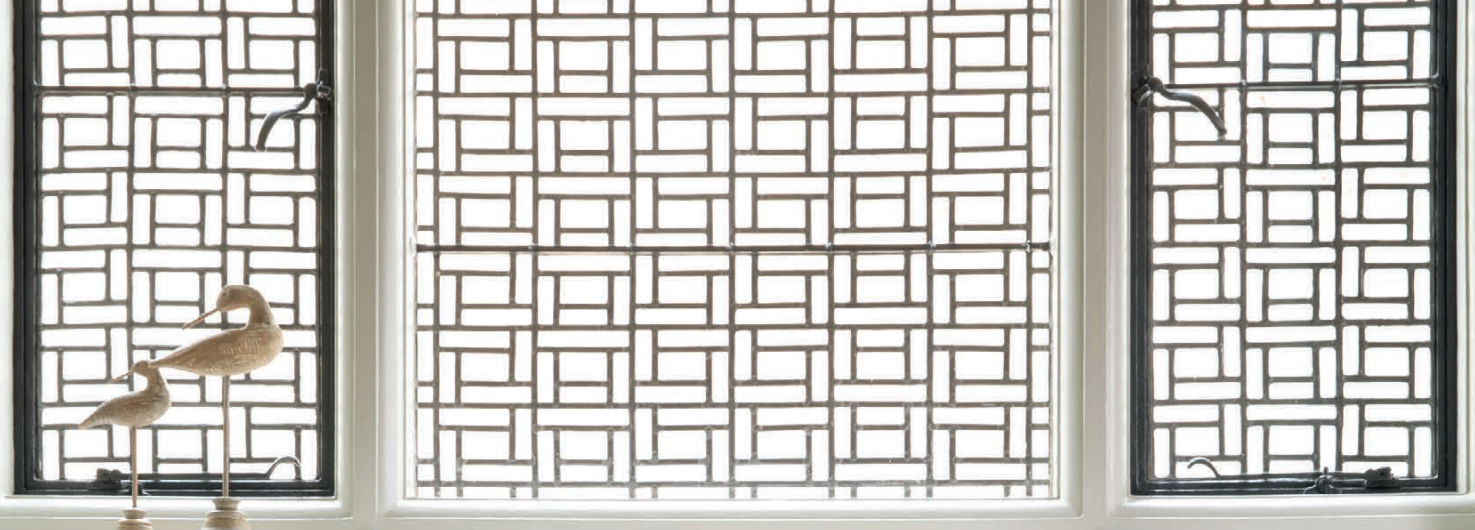
MID092 CONSOLE 74 X 117 X 35 CM, 29 X 46 X 14"



MID098 NARROW CONSOLE 78 X 120 X 30 CM, 30 X 47 X 11"

MID107 LARGE SIDE TABLE 70 X 66 X 43 CM, 27 X 25 X 17"





MID090 SIDEBOARD 75 X 117 X 40 CM, 29.5 X 46 X 15.5"

MID105 SIDE TABLE 75 X 53 X 36 CM, 29.5 X 21 X 14"



MID106 SOFA TABLE 57 X 40 X 50 CM, 22.5 X 16 X 19.5"  
MID038L BEDSIDE TABLE WITH WOODEN PULL 65 X 52 X 35 CM, 25.5 X 20.5 X 14"  
MID035 BEDSIDE TABLE WITH LIP HANDLES 64 X 50 X 40 CM, 25 X 19.5 X 15.5"





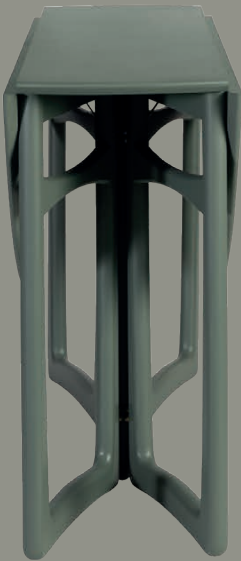






MID143 BRASS FRAMED CUPBOARD 86 X 61 X 47 CM, 34 X 24 X 18.5"  
MID143A BRASS FRAMED CHEST OF DRAWERS 86 X 61 X 47 CM, 34 X 24 X 18.5"







MID040LQ LARGE CHEST OF DRAWERS 127 X 103 X 42 CM, 50 X 40.5 X 16.5"

MID041LQ CHEST OF DRAWERS 90 X 80 X 40 CM, 35.5 X 31.5 X 15.5"

MID044LQ LARGE BEDSIDE TABLE 79 X 64 X 40 CM, 31 X 25 X 16"

MID096LQ SERVER 84 X 113 X 38 CM, 33 X 44.5 X 15"



SELECT MID-CENTURY PIECES CAN BE  
GIVEN A MORE CONTEMPORARY  
FEEL WITH OUR VINTAGE  
LACQUER FINISH



MID930 MODULAR BEDSIDE TABLE 78 X 53 X 42 CM, 30.5 X 21 X 16.5"

MID931 MODULAR BEDSIDE TABLE WITH FOUR DRAWERS 78 X 53 X 42 CM, 30.5 X 21 X 16.5"

MID940 MODULAR CHEST OF DRAWERS 78 X 102 X 55 CM, 30.5 X 40 X 21.5"





MID971 MODULAR DESK WITH FIVE DRAWERS 78 X 112 X 55 CM, 30.5 X 44 X 21.5"  
MID972 MODULAR DOUBLE DESK 78 X 173 X 55 CM, 30.5 X 68 X 21.5"  
MID973 MODULAR DESK WITH TEN DRAWERS 78 X 180 X 55 CM, 30.5 X 71 X 21.5"









VID SYMASKINEN  
OLSSON-HAGALUND, OLLE - MID-20TH CENTURY

THE BOBBIN COLLECTION  
BY TURNER POCOCK  
FOR CHELSEA TEXTILES

BOBBIN FURNITURE ORIGINATED IN THE 17TH CENTURY IN NORTHERN EUROPE. FURNITURE MAKERS USED THE OFF-CUTS FROM FACTORIES PRODUCING SEWING BOBBINS TO CREATE WHIMSICAL DESIGNS FOR CHAIRS CRIBS, BEDS AND MORE. THE STORY GOES, AS POPULARITY INCREASED IN THE UNITED STATES BY THE LATE 1800S, BOBBIN FACTORIES WERE SELLING THEIR ENTIRE INVENTORY TO FURNITURE MAKERS.

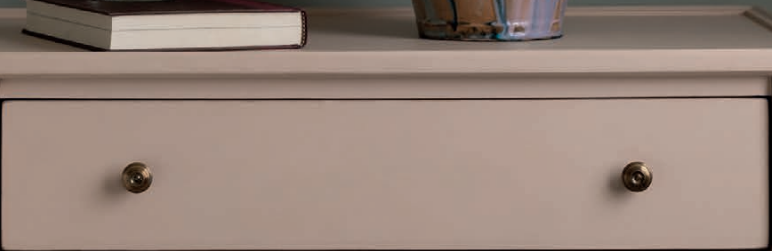
THIS DOMESTIC YET DEEPLY ROMANTIC AESTHETIC EXEMPLIFIES TURNER POCOCK'S EMPHASIS ON COMFORT AND QUALITY FAMILY LIVING, WHICH PERFECTLY COMPLEMENTS CHELSEA TEXTILES' FAITHFUL REPRODUCTION OF ANTIQUE FURNITURE; CREATING HEIRLOOMS FOR FUTURE GENERATIONS.

BOB030 BOBBIN BEDSIDE TABLE 65 X 45 X 45 CM, 25.5 X 18 X 18"

BOB031 BOBBIN BEDSIDE TABLE WITH THREE DRAWERS 70 X 45 X 38 CM, 27.5 X 18 X 15"

BOB030L BOBBIN LARGE BEDSIDE TABLE 70 X 70 X 50 CM, 27.5 X 27.5 X 20"









BOB071 BOBBIN DESK 77 X 120 X 60 CM, 30.5 X 47 X 23.5"  
BOB070 BOBBIN DRESSING TABLE 77 X 120 X 55 CM, 30.5 X 47 X 21.5"  
BOB090 BOBBIN CONSOLE 75 X 140 X 40 CM, 29.5 X 55 X 16"









BOB170S BOBBIN BED SINGLE (TO FIT 90 X 190CM MATTRESS) 98 X 102 X 202 CM, 38.5 X 40 X 79.5"

BOB170D BOBBIN BED DOUBLE (TO FIT 135 X 190CM MATTRESS) 98 X 147 X 202 CM, 38.5 X 58 X 79.5"

BOB170K BOBBIN BED KING (TO FIT 150 X 200CM MATTRESS) 98 X 162 X 212 CM, 38.5 X 64 X 83"

BOB170SK BOBBIN BED SUPER KING (TO FIT 180 X 200CM MATTRESS) 98 X 192 X 212 CM, 38.5 X 75.5 X 83"



GUS040 BUREAU 85 X 92 X 45 CM, 33.5 X 36 X 18"

GUS040A LARGE BUREAU 107 X 92 X 45 CM, 42 X 36 X 18"

GUS041 SMALL BUREAU 80 X 67 X 40 CM, 31.5 X 26 X 16"



# JUNIOR COLLECTION

A SELECTION OF OUR FURNITURE CAN BE MADE SIZED DOWN FOR OUR YOUNGER CUSTOMERS. ESPECIALLY POPULAR ARE THE JUNIOR EDITIONS OF OUR MODULAR COLLECTION, PERFECT FOR SMALLER ROOMS IN NEED OF WORK SPACE AND STORAGE.

FOR THE JUNIOR COLLECTION WE CREATED A RANGE OF GENTLY DISTRESSED, LIVELY COLOURS FOR A MORE PLAYFUL APPEARANCE.





MID971AJ JUNIOR MODULAR DESK WITH NINE DRAWERS 72 X 129 X 42 CM, 28 X 51 X 16.5"

MID930J JUNIOR MODULAR BEDSIDE TABLE 72 X 52 X 42 CM, 28 X 20.5 X 16.5"

GUS040J JUNIOR BUREAU 68 X 74 X 36 CM, 27 X 29 X 14"



MID010J JUNIOR CHAIR WITH UPHOLSTERED BACK 74 X 43 X 52 CM, 29 X 17 X 20.5"

MID013J JUNIOR CHAIR WITH SQUARE BACK 76 X 40 X 40 CM, 30 X 16 X 16"

TRO026J JUNIOR FAUX BAMBOO CHAIR 78 X 44 X 44 CM, 31 X 17.5 X 17.5"





# PAINTED BY HAND

CHELSEA TEXTILES' FURNITURE IS HAND-CRAFTED, HAND-PAINTED AND HAND-DISTRESSED BY MASTER CRAFTSMEN TO EMULATE THE WORN PAINT FINISH FOUND ON ORIGINAL PIECES.

IT HAS TAKEN YEARS TO PERFECT THE NATURALLY DISTRESSED LOOK THAT IS SYNONYMOUS WITH THE BRAND.

DIFFERING DEGREES OF DISTRESSING ARE APPLIED ACCORDING TO COLLECTION; FROM GENTLY WORN TO HIGHLY WEATHERED.

EACH PIECE IS ENTIRELY MADE BY HAND; SLIGHT VARIATIONS IN DISTRESSING AND COLOUR TONES WILL OCCUR.

PAINTED WOOD SAMPLES CAN BE REQUESTED AND WILL GIVE AN INDICATION OF COLOUR AND FINISH.

# SIGNATURE COLOURS

## GUSTAVIAN, ENGLISH & FRENCH COUNTRY

THE PALLETTE FOR GUSTAVIAN, ENGLISH & FRENCH COUNTRY FURNITURE IS INSPIRED BY THE MUTED COLOURS OF SCANDANAVIA AND THE SUBTLE HUES OF PROVENCE.

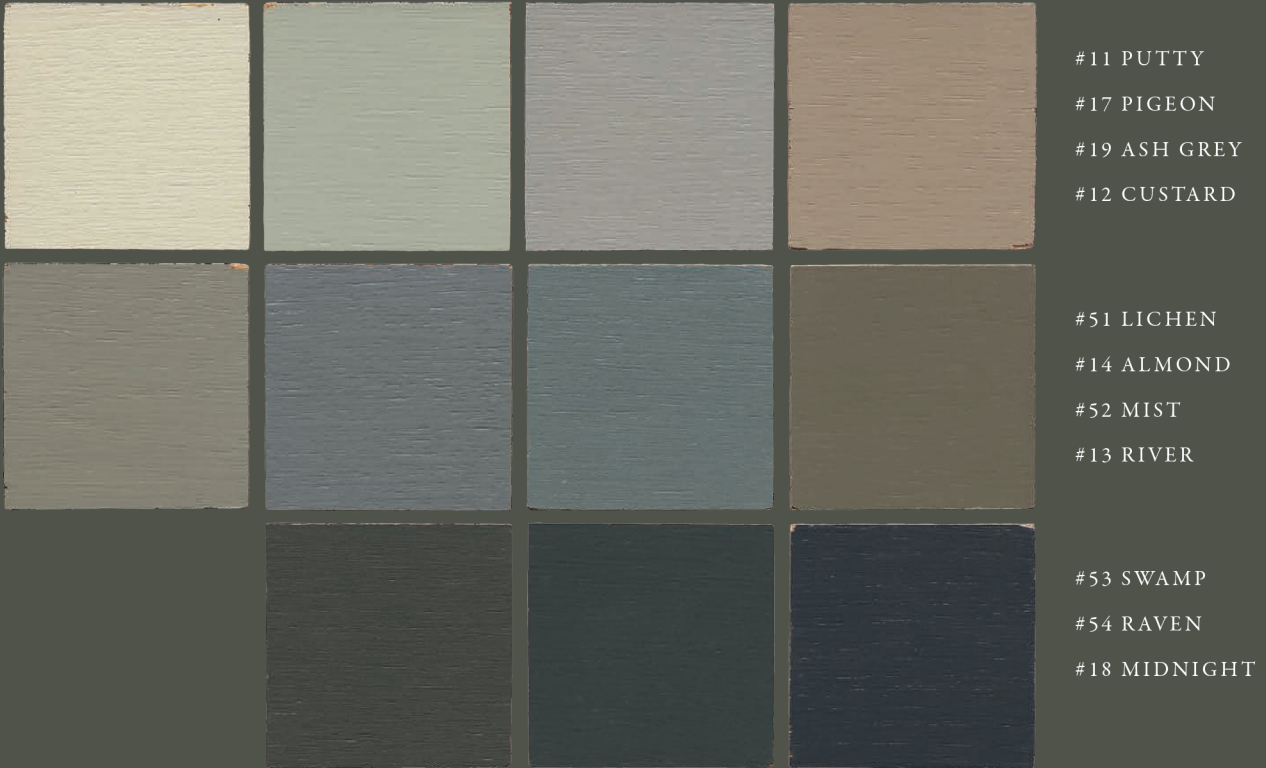
MASTER CRAFTSMEN HAND-PAINT AND HAND-DISTRESS THE FURNITURE GIVING IT A UNIQUE AND UNPARALLELED ANTIQUE LOOK.

THE ENGLISH & FRENCH COUNTRY COLLECTION CONTAINS THE MOST DISTRESSED PIECES, HAVING AN INHERENTLY WORN AND RUSTIC FEEL.

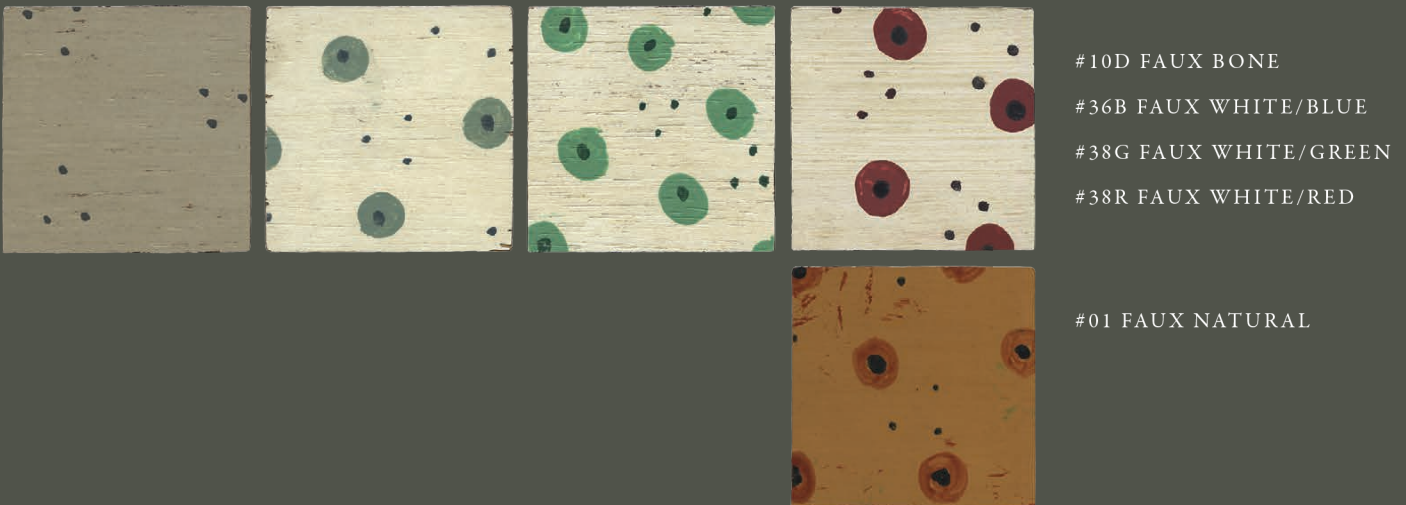


# MID-CENTURY & FAUX BAMBOO

INSPIRED BY SCANDINAVIAN SIMPLICITY, THE SUBTLE COLOURS OF THE MID-CENTURY COLLECTION SIT PERFECTLY WITHIN TODAY'S PARED DOWN INTERIORS. THE DISTRESSING IS MINIMAL JUST TO GIVE THE FURNITURE A VINTAGE LOOK.



THE FAUX BAMBOO FINISH IS HAND-PAINTED AND HAND-DISTRESSED TO MIMIC THE FINISH FOUND ON 18TH CENTURY FURNITURE.



# VINTAGE LACQUER & JUNIOR COLLECTION

THE VINTAGE LACQUER IS SPRAYED, POLISHED AND THEN RUBBED BACK BY HAND TO GIVE THE APPEARANCE OF A ONCE GLOSSY FINISH THAT HAS DULLED WITH TIME.



THE JUNIOR RANGE OF GENTLY DISTRESSED, LIVELY COLOURS, CREATE A MORE PLAYFUL APPEARANCE, PERFECT FOR CHILDREN'S ROOMS OR MORE VIBRANT INTERIORS.





# CHELSEA TEXTILES

## LONDON

40-42 PIMLICO ROAD  
LONDON SW1W 8LP  
UNITED KINGDOM  
TEL: +44 (0)20 7584 5544  
INFO@CHELSEATEXTILES.CO.UK

## NEW YORK

THE FINE ARTS BUILDING  
232 EAST 59TH STREET  
NEW YORK, NY 10022 USA  
TEL: +1 212 758 0005  
INFO@CHELSEATEXTILES.COM

## AGENTS

### DALLAS

GEORGE CAMERON NASH  
TEL: +1 214 744 1544  
DALLAS@GEORGECAMERONNASH.COM

### HOUSTON

GEORGE CAMERON NASH  
TEL: +1 713 892 5710  
HOUSTON@GEORGECAMERONNASH.COM

### ATLANTA

AINSWORTH-NOAH  
TEL: +1 404 231 8787  
INFO@AINSWORTH-NOAH.COM

### LOS ANGELES

MIMI LONDON INC.  
TEL: +1 310 855 2567  
INFO@MIMILONDON.COM

### FRANCE & BELGIUM

PORCHER  
TEL: +32 2 735 75 76  
PORCHER@PORCHER.BE

### NORWAY

POESI INTERIØRAGENTUR  
TEL: +47 22 12 81 80  
POST@POESIINTERIOR.NO

### SPAIN

LANTERO & LANTERO  
TEL: +34 91 411 4278  
CHELSEA@LANTEROYLANTERO.COM

### SWEDEN

OSCAR & CLOTHILDE  
TEL: +46 8 611 53 00  
ORDER@OSCARCLOTHILDE.COM

### MELBOURNE

TIGGER HALL DESIGN  
TEL: +61 412 534 419  
MELBOURNE@TIGGERHALL.COM

### SYDNEY

TIGGER HALL DESIGN  
TEL: +61 421 857 437  
SYDNEY@TIGGERHALL.COM

WWW.CHELSEATEXTILES.COM





